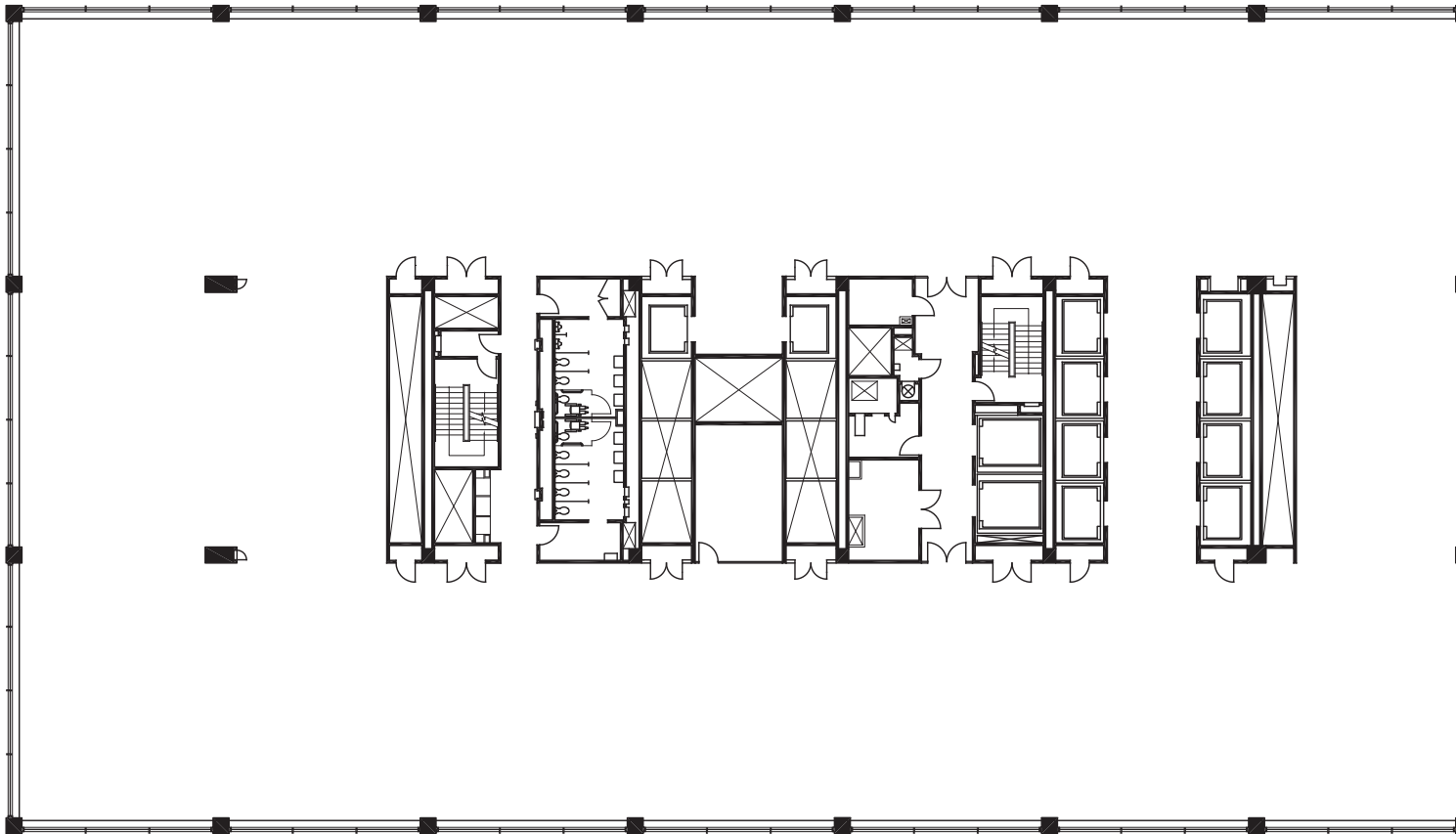


# TYPICAL MID-RISE PLAN | 28,466 RSF



# 333

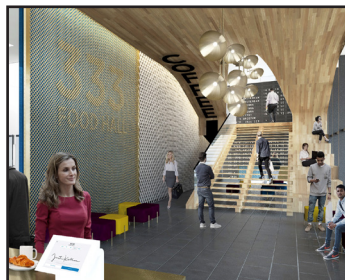
## SOUTH WABASH

UNPARALLELED VIEWS.  
DISTINCTIVE PRESENCE.

JONATHON W. CORDELL  
Senior Managing Director  
T +1 312 224 3133  
[jon.cordell@ngkf.com](mailto:jon.cordell@ngkf.com)

WILLIAM ROLANDER, JR.  
Executive Managing Director  
T +1 312 224 3130  
[bill.rolander@ngkf.com](mailto:bill.rolander@ngkf.com)

500 W. Monroe Street, Suite 2900  
Chicago, IL 60661  
[www.ngkf.com](http://www.ngkf.com)



 **Newmark Grubb  
Knight Frank**